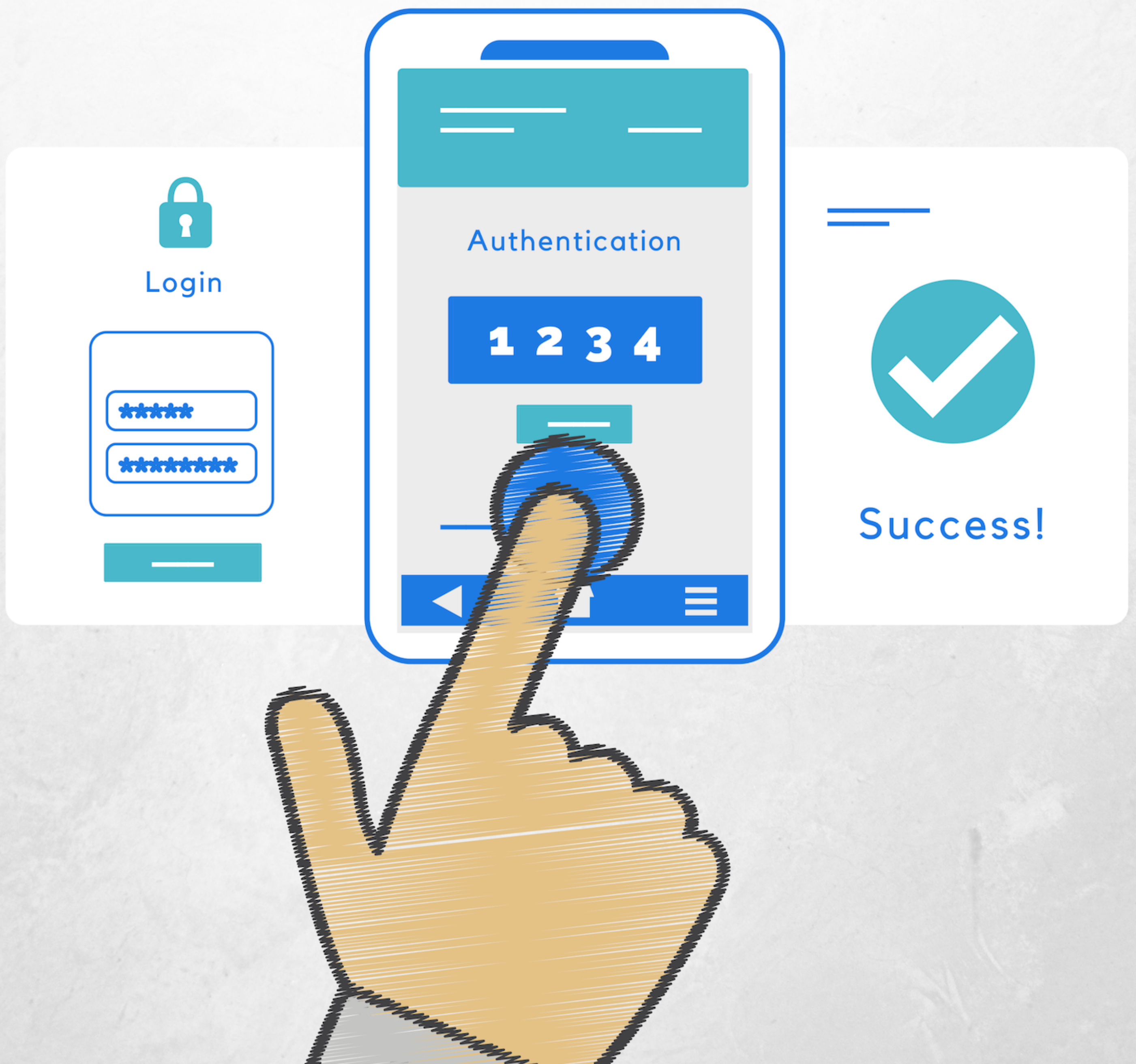
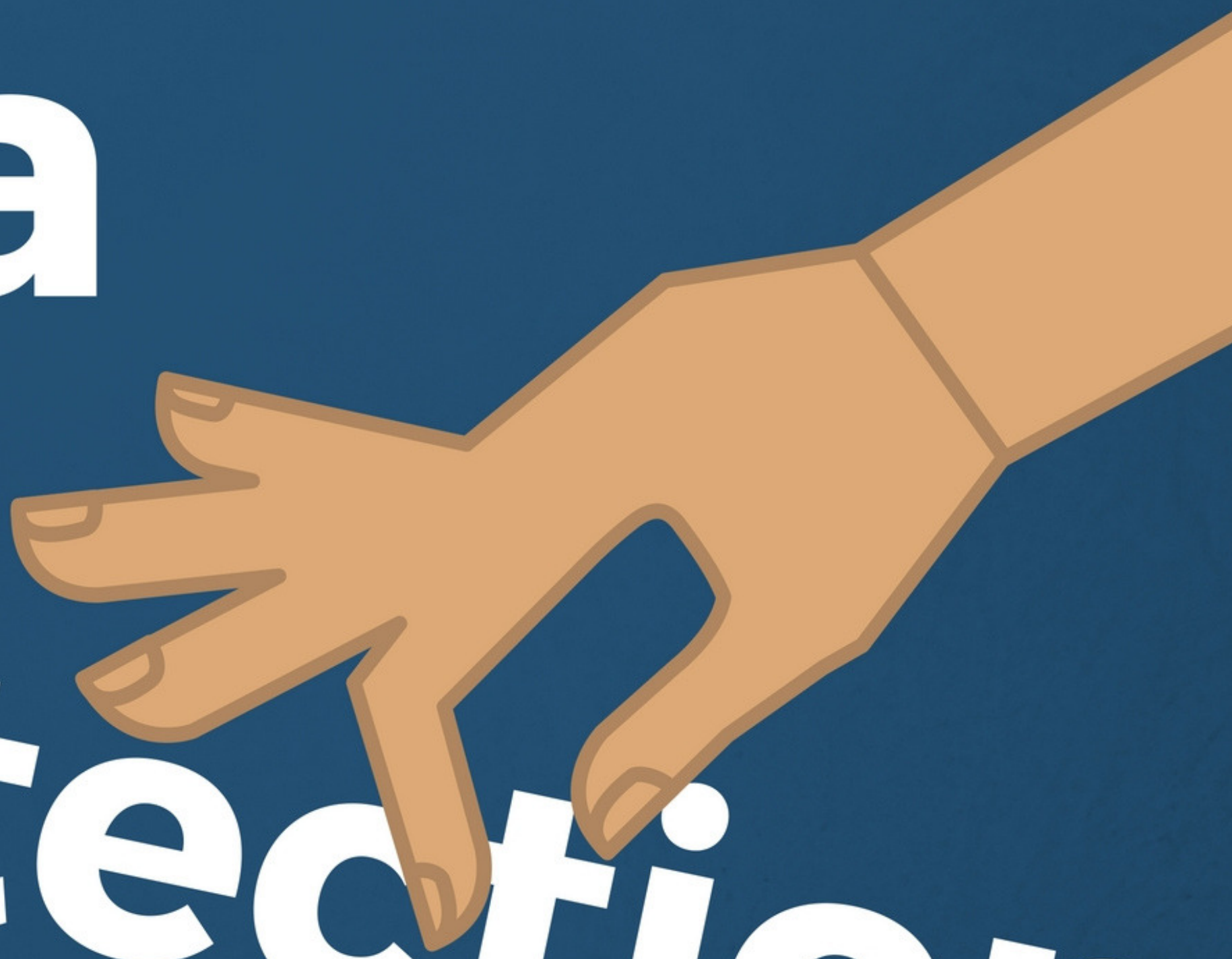


Avoid being an 'easy-picking' for
cyber criminals. Enable...

Two-Factor Authentication



Data



Protection

Is In Your

Hands

**Think twice before
sharing information**

Emailing sensitive data?



Make sure you haven't
entered the **wrong recipient**

To: ~~XXX~~

Cc: ~~XXX~~

Bcc: ~~XXX~~

Emailing Sensitive Data?



To: XXXX

Cc: XXXX

Bcc: XXXX

Always double check that you've entered the **correct recipient.**

Don't make life easy for cyber criminals.

On the move?

Please be careful
with **physical data** when
taken off-site.



Handling **Data**? Think **Protection**.

Leaving your desk?



Keep data secured by locking your computer and devices **when not in use.**

Don't make life easy for cyber criminals.

How strong is your Password?

Weak passwords are easy to crack.
Keep things safe by making sure you...



Keep it long and complicated



Use both upper and lower case letters



Avoid guessable info (e.g., D.O.B)



Implement two-factor authentication



Change your password regularly



Never share your password

Don't make life easy for cyber criminals.

Don't fall for the

PHISHING

bait!

Be suspicious of...



Hyperlinks to fake websites



Unofficial "From" addresses



"Urgent" requests or threats



Emails containing attachments



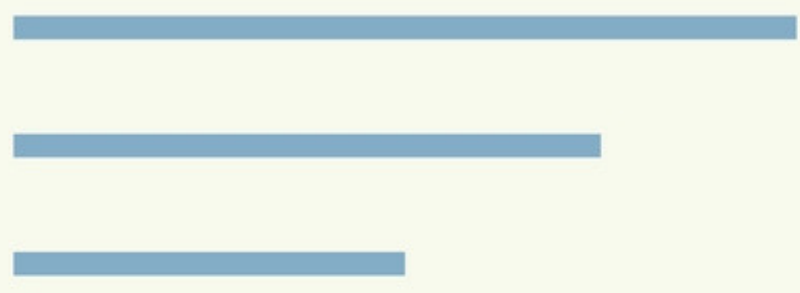
Requests for sensitive information



Generic subject lines and intro messages

Don't make life easy for cyber criminals.

Handling **Data?** Think **Protection.**



Think

before leaving sensitive documents **unattended.**

All of the information you work with has

Value.

